

ABOUT ROYCE ENGINEERING

PRECISION-ENGINEERED SOLUTIONS THAT KEEP INDUSTRIES MOVING.



Royce Engineering Pty Ltd is a specialized mechanical engineering and manufacturing company delivering precision-engineered solutions across Africa. We provide reliable, high-quality services to the mining, industrial, manufacturing, and processing sectors.

Our expertise includes plant and process design, mechanical and structural design and manufacture, CNC turning and milling, fabrication, mechanical assemblies, crusher refurbishments, and full machine shop capabilities. We also offer plant and equipment installations, commissioning, repairs, and refurbishments tailored to each client's operational needs.

With a strong focus on quality workmanship, precision, and dependable service, Royce Engineering is committed to delivering practical engineering solutions that keep industries moving.

OUR SERVICES

01

Plant & Process Design

02

**Mechanical / Structural
Design & Manufacture**

03

**Plant & Equipment
Installations / Commissioning**

04

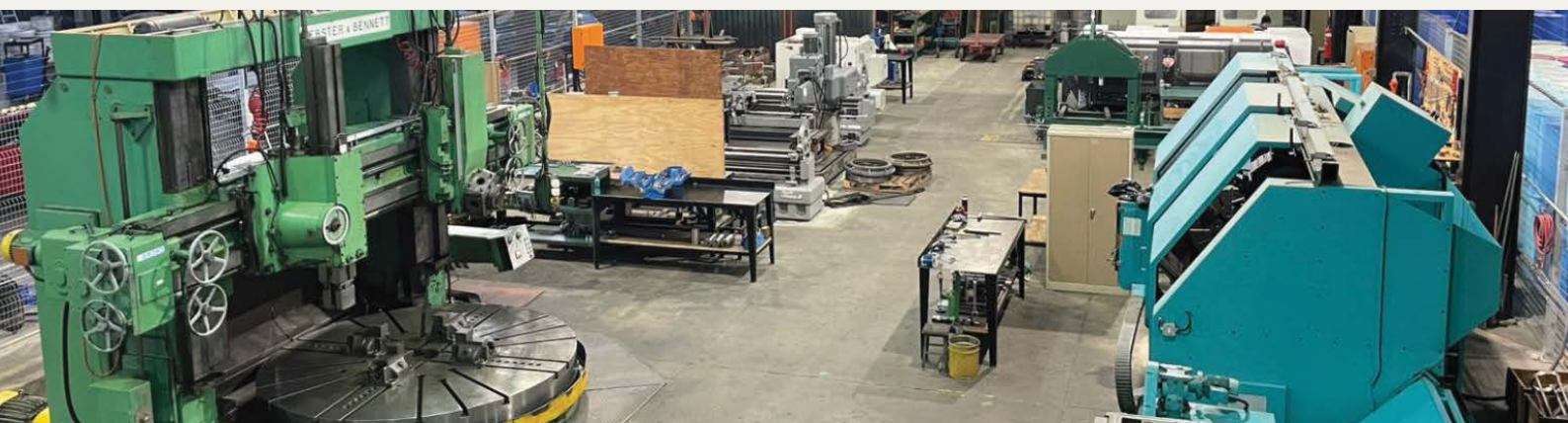
**Plant & Equipment
Repairs / Refurbishments**

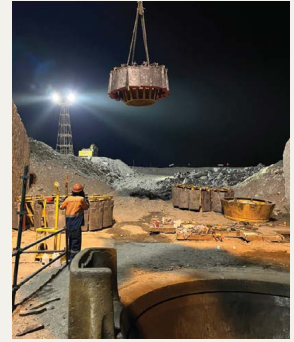
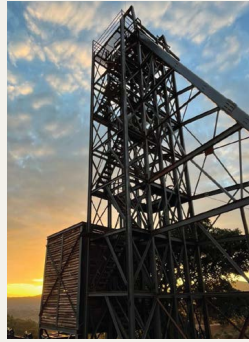
05

**Full comprehensive
Machine Shop**

06

Mechanical Assemblies

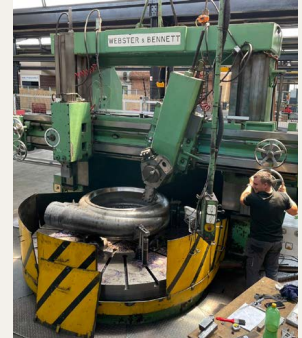




OUR MACHINERY

CNC LATHES

| | |
|---------------------|--------------------------------|
| Mazak Slant Turn 80 | 1000mm swing × 3 000mm centers |
| Victor V-Turn S26 | 430mm swing × 1 100mm centers |
| Daewoo Lynx 200 | 280mm swing × 300mm centers |



CONVENTIONAL LATHES

| | |
|-----------|-------------------------------|
| Mazak Rex | 770mm swing × 2 000mm centers |
| Mazak Mk2 | 560mm swing × 2 000mm centers |



CNC MILLING

| | |
|--------------------------------|------------------------------------|
| Victor V-Centre 145 (4th axis) | 1450mm×700mm×700mm • 2T table load |
|--------------------------------|------------------------------------|



CONVENTIONAL MILLING

| | |
|----------------------------|-----------------------|
| Pinnacle Turret Mill | Table 1065mm × 230mm |
| TOS Horizontal Boring Mill | Table 1000mm × 1200mm |



VERTICAL BORING MILL

| | |
|-----------------------|-------------------------------------|
| 120" Webster & Bennet | 3m swing • 2m high • 20T table load |
|-----------------------|-------------------------------------|

OTHER EQUIPMENT

| | |
|-----------------------------------------------------------|---------------------|
| 15 Ton Overhead Crane & Doosan 3 Ton Forklift | |
| Ikeda Radial Arm Drill | 5MT |
| Jones Shipman Surface Grinder | Table 865mm × 180mm |
| Bencor Presses | 30T & 100T |
| Large variety of mobile Enerpac pressing tools up to 100T | |

CONTACT US



EMAIL:

sales@royceengineering.co.za
taygen@royceengineering.co.za

MOBILE:

Keegen: +27 (072) 999-7759
Taygen: +27 (071) 620-5622

ADDRESS:

1B Debid Road, Nuffield, Springs

www.royceengineering.co.za